

# Words Spelt With '-er' and '-est'



twinkl

# Comparing Adjectives

Looking at things to find differences and similarities is called **comparing**.

To compare objects, we use **adjectives** to **describe** them.

Look at how the adjectives change in these sentences.

The ticket booth is **tall**

The merry go round is **taller**

The helter skelter is **tallest**



The adjective **tall** doesn't change. The ending 'er' or 'est' is just added on.

# Comparing Using 'er'

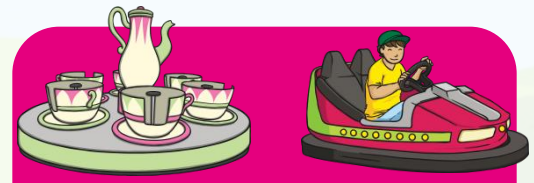
In these words 'er' has been added on, but the spelling of the root word has not changed.



**grander**



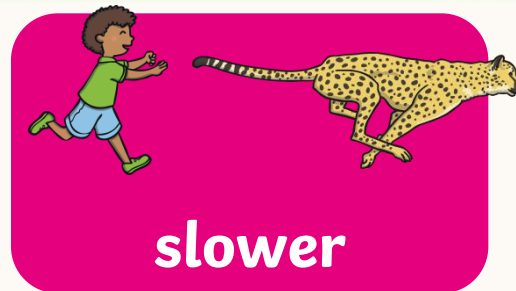
**fresher**



**quicker**



**taller**



**slower**

# Comparing Using 'est'

In these words 'est' has been added on, but the spelling of the root word has not changed.



**grandest**



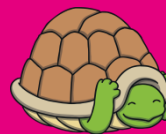
**freshest**



**quickest**



**tallest**

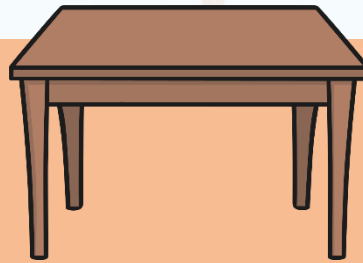


**slowest**

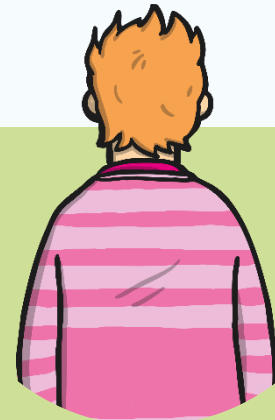
# Stressed /er/ Spelt 'ur'



Can you air write an 'est' with your finger?



Can you write a 'er' on your table or on the carpet?



Can you write either an 'est' or an 'er' on a partner's back?

Can they tell what letters you have written?

Here are this week's spellings to practise.

grander

grandest

fresher

freshest

quicker

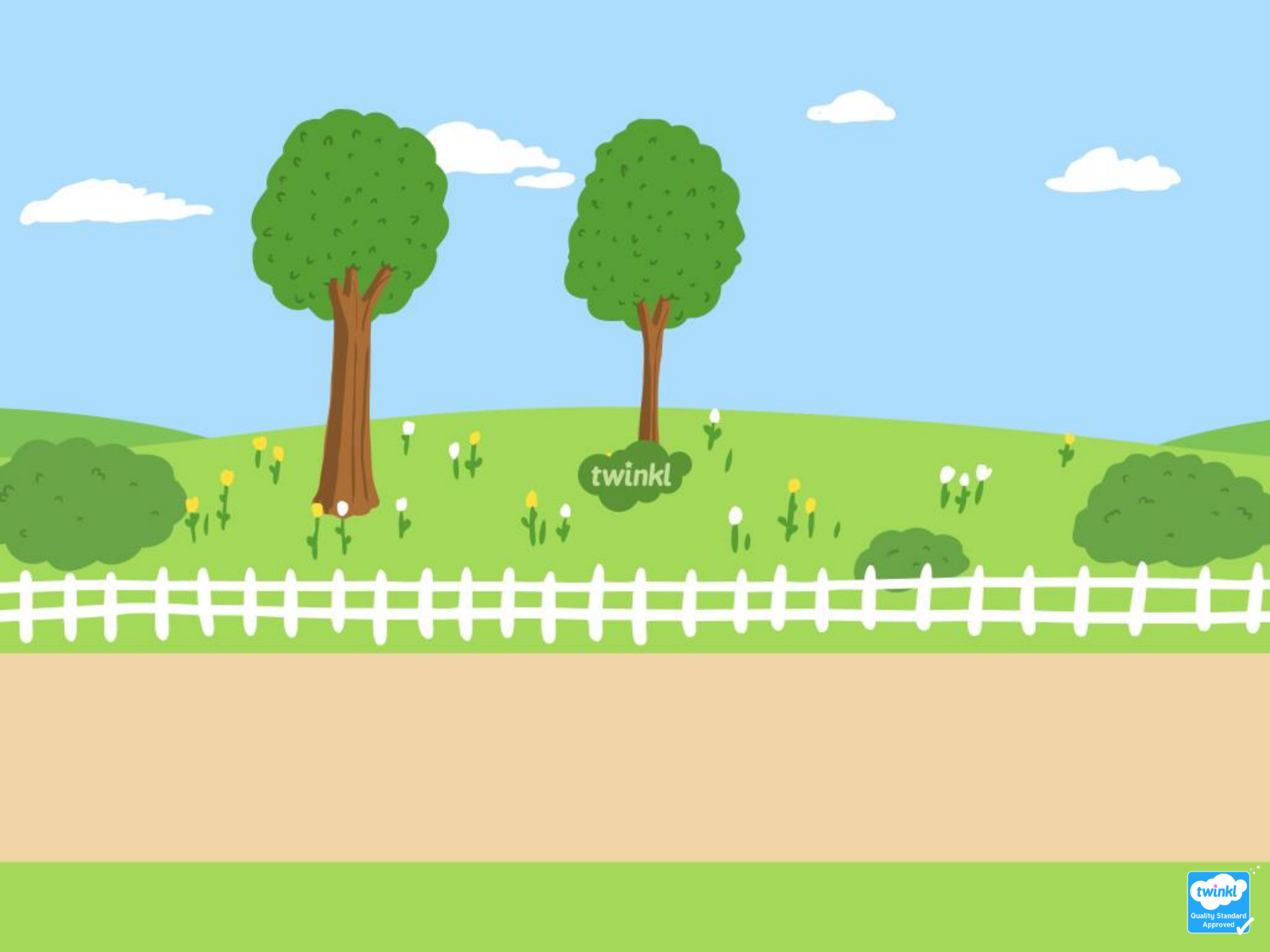
quickest

taller

tallest

slower

slowest



twinkl